

Fashion Drive Mall

Monterrey, Mexico

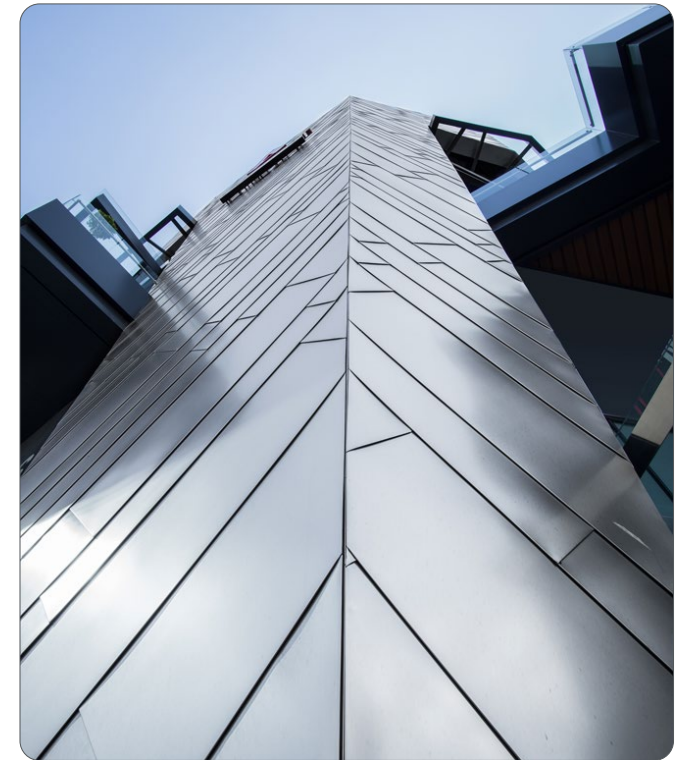
Fashion Drive Mall is located in Monterrey, Nuevo León, a city in the north of Mexico. The façade was designed and built by “Grupo Básica”, a Mexican company specialized in design, consultancy and installation of façades. The owner of the mall wanted the project to become an icon of the area, an attractive element that would enhance it.

Different materials such as stone or phenolics were considered, but stainless steel convinced the designer for the shine that only stainless can offer, in addition to the economic advantages such as its durability and low maintenance. The façade consists of a set of rectangular stainless steel sheets placed in an overlap simulating the appearance of fish scales. 316L stainless steel was used. 24 gauge was chosen to facilitate the bending required by the mechanical union between the sheets. The surface finish is a nuanced finish with worm-like figures in order to reduce the brightness to avoid dazzling the drivers, but at the same time shine enough to attract people to get in to the mall.

The construction lasted just over a year beginning in July 2016 and ending in September 2017.

The mechanical union between the stainless scales was made by the flat lock system. On the edges of the sheets, were made four 180° bends, which allowed the hitch between one sheet and another. In addition, each sheet was assembled mechanically to

the OSB wood substrate of the structure by bolted stainless clips. This technic of mechanical union avoids the use of welding, adhesives, sealants or liquid elements that could fail and stain the façade by draining them. The mechanical assembly also helps to eliminate the possible effects in long term by dilation and contraction of a metallic material. The joints to be floating with each other, allow the material to expand and contract freely in the changes of temperature by cycles such as day and night, winter and summer, without this resulting in damage to the façade. The arrangement as fish scales makes the façade waterproof since it allows the water to flow freely over the surface without entering the building, guaranteeing the watertightness. Stainless steel façades seem something complicated or expensive, but it should not be so. Stainless provides great benefits, with an adequate knowledge of the material, good cutting to avoid waste and a suitable installation system, stainless steel is a material competitive with others in the market. Once installed, it provides a guarantee for the investment. After one year, this façade has had an excellent performance, has not required maintenance and has undoubtedly enhanced the area by attracting the attention of people passing through the place.



Environment:	urban
Material:	316L stainless steel, nuance finish, with a thickness of 0.635 mm
Architects:	Grupo Basica
Photographs:	IMINOX, Grupo Basica
More information:	grupobasica.com or iminox.org



CAMINO REAL

alboa.
entertainment hall

Dunkin'
DONUTS

H&M

Tink Hotties

FORBIDDEN
MADNESS

CHARLOTTESVILLE



ENTRADA